

Quick Facts of SUMS



Founded in

1974



From the Lake Country to the World

Half a century with local medicine and beyond



50th Anniversary Website



The 50th anniversary has renewed our sense of gratitude to all the stakeholders who have continued your involvement in SUMS. With this in mind, we intend to move forward into the next 50 years. Thank you for your continued support of SUMS.

Faculty and Staff

(May 2024)

1,464

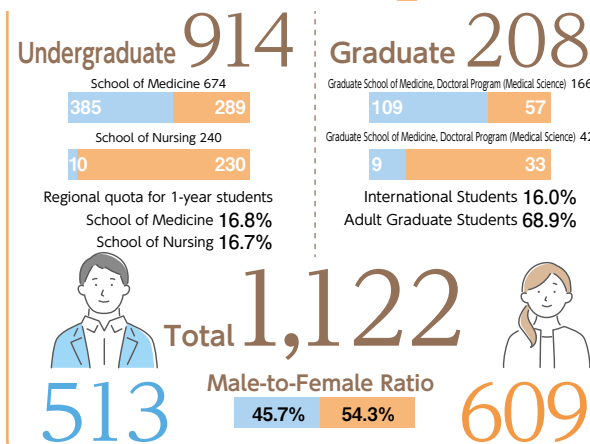
(Percentage of females)

All Faculty and Staff members **63.2%** Faculty members **26.7%**

The ratio of female faculty members at national universities has been increasing slightly each year. The ratio at SUMS is slightly higher than that of national medical universities as a whole (26.4%, The MEXT School Basic Survey 2024). SUMS is promoting the creation of an environment in which both genders can play an active role.

Number of Students

(May 2024)

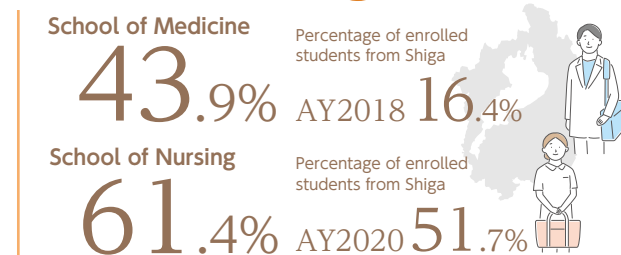


Student-to-Faculty Ratio



SUMS has more faculty members than the national average for the number of students (9.2), which enables us to provide generous support in regard to teaching and research (General Survey of Schools by MEXT, 2024). At SUMS, we strive to provide each and every student with careful and warm guidance.

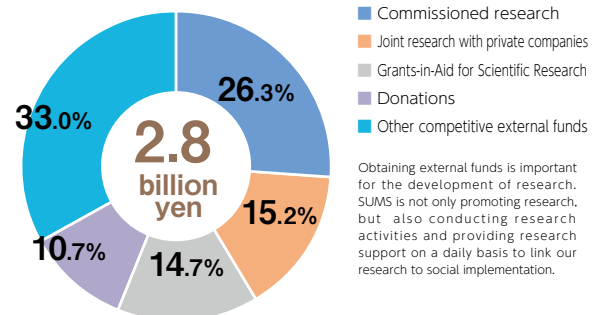
Career Paths of Alumni in Shiga



The percentage of graduates from the School of Nursing in AY 2023 who found employment in Shiga Prefecture was higher than usual. This may be because the percentage of students from Shiga Prefecture at the time of enrollment was slightly higher than usual. As for the School of Medicine, compared to the percentage of students who were from Shiga Prefecture at the time of admission, the percentage of students employed, etc. in Shiga Prefecture has increased significantly. Regardless of whether they are from Shiga Prefecture or not, the fact that many graduates are working in Shiga Prefecture is boosting our "contribution to the local community."

External Funds Received

FY2023



Ranked 20th in Research Funds Received per joint research with private companies (University Fact Book 2024, Japan Business Federation) (See also page 35)

See website of IR office.



Adoption Rate of Grants-in-Aid for Scientific Research (KAKENHI) FY2023

31.3%

National Average

27.5%

We support young researchers



SUMS has a high adoption rate for "Grant-in-Aid for Early-Career Scientists (39.2%)" and "Grant-in-Aid for Research Activity Start-ups (80.0%)". We encourage young researchers to apply for the grants in the spirit of "No Application, No Adoption".

Patent Licensing Rate

University Fact Book 2024
(Japan Business Federation)

Ranked

2nd

49.6%

Although the number of patents held by SUMS is small compared to that of comprehensive universities, the licensing rate is high, and we are returning the results of our research to society.

University Rankings



Times Higher Education
THE World University Rankings: Japan 2023
In the field of "Educational Resources"

Ranked
8th/271 universities

In our educational and research environment,
each student can receive warm and
substantial support

Educational Resources represents how well-rounded education is, based on data such as funds per student and faculty ratios.

Our overall ranking has also improved from the previous year.

SUSTAINABLE
DEVELOPMENT
GOALS



THE Impact Ranking 2024
SDG3 "Good Health and Well-being"

THE Impact Ranking 2024
SDG3 "Good Health and Well-being"

Domestic ranking
6th/72 universities

Global ranking
71st/1,498 institutions

Recognized for its remarkable efforts to
promote health and well-being in local
communities to achieve the SDGs

This ranking evaluates university social contributions and research activities using the SDG framework.