

# Quick Facts of SUMS



## Founded

in **1974**



The 50th anniversary will be celebrated in 2024

From the Lake Country to the World

Half a century of services to health care and beyond

50<sup>th</sup>  
滋賀医科大学

50th Anniversary Website



## Faculty and Staff

(May 2022)

**1,417**

— Percentage of females —

All Faculty and Staff members **62.0%**

Faculty members **26.8%**

The Japan Association of National Universities developed the "Action Plan for the Promotion of Gender Equality at National Universities" and a follow-up survey has been conducted annually. The target for the female faculty ratio by 2025 is set at 31%. However, the survey shows the average ratio at universities were 24.4% in 2020 and 25.0% in 2021. Although SUMS is above the average, we must continue to create an environment where both men and women can work equally.

## Number of Students

(May 2022)

Male Female

**Undergraduate 922**

School of Medicine 682

School of Nursing 240

60.6% 39.4% 4.2% 95.8%

413 269 10 230

**Graduate 214**

Doctoral Program 170

Master's Program 44

65.3% 34.7% 20.5% 79.5%

111 59 9 35

International Students 15.0%

Adult Graduate Students 72.4%

**Total 1,136**


Male-to-Female Ratio

**543** ♂ 47.8% 52.2% **593** ♀

approx. **11 : 12**

## Student-to-Faculty Ratio

(May 2022)



Faculty Undergraduate students

**1 : 2.4**

National University Average ST Ratio

**1 : 9.4**

(researched by IR office)

SUMS has more faculty than the national average for the number of students, which allows us to provide generous support in teaching and research.

We also endeavor to give better guidance to each student.

## Career Paths of Alumni in Shiga

(FY2021)

Considering the percentage of students from Shiga at the time of admission (18.8% for the School of Medicine and 39.7% for the School of Nursing), it is clear that even those not from Shiga remain in the prefecture after graduating. We believe this is connected to our university's goal of "contributing to the community."

**40.0%**

School of Medicine

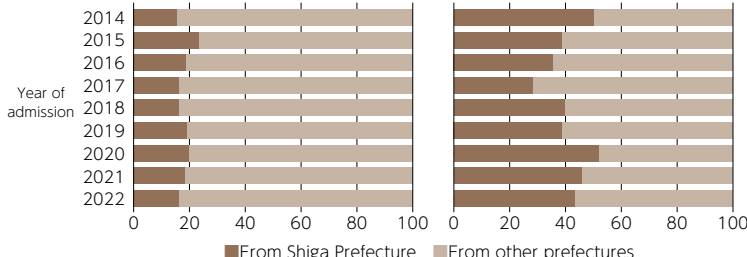
**56.5%**

School of Nursing

**Percentage of enrollment of students from Shiga**

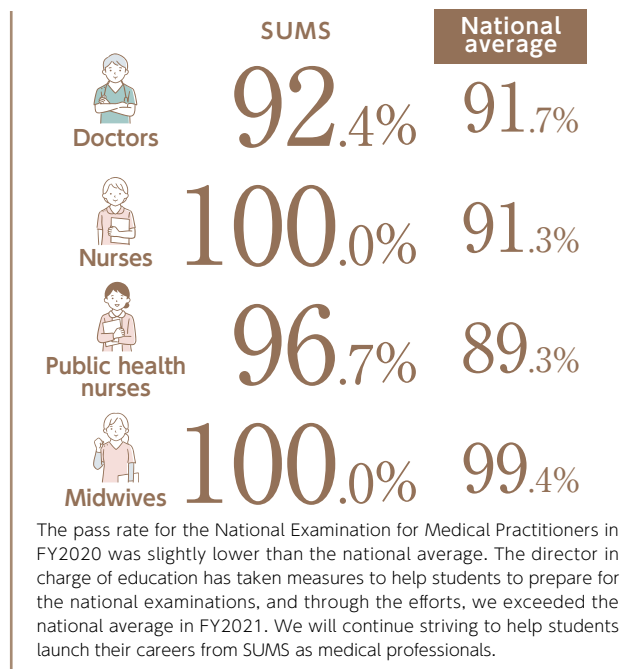
School of Medicine School of Nursing

Year of admission

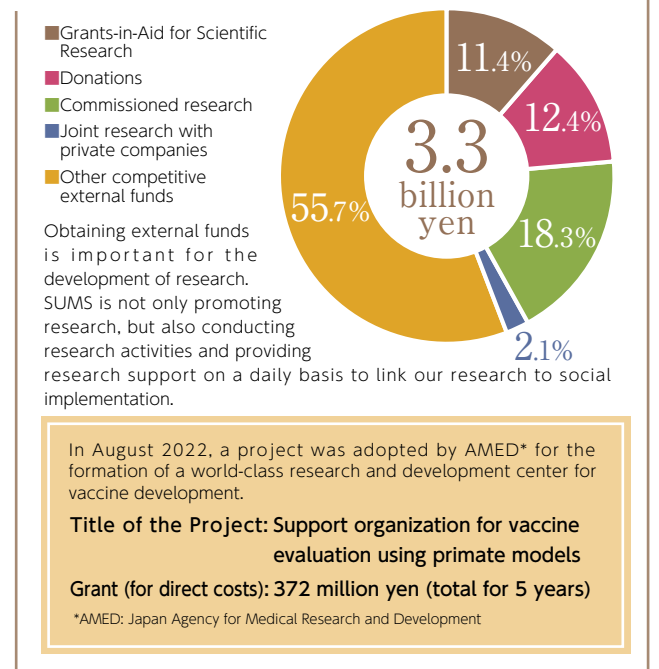


From Shiga Prefecture From other prefectures

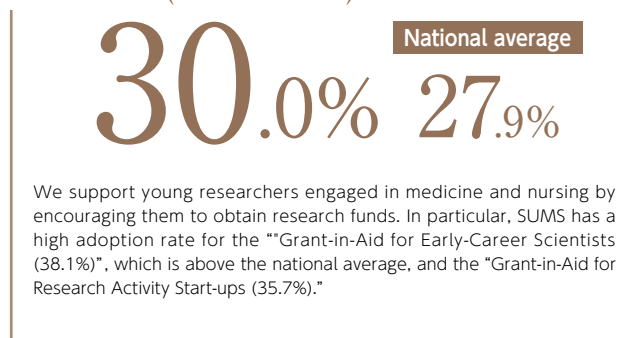
## National Examination Pass Rate (FY2021)



## External Funds Received (FY2021)



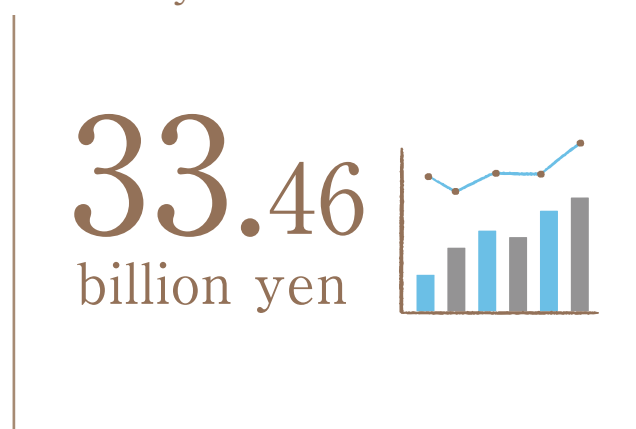
## Adoption Rate of Grants-in-Aid for Scientific Research (KAKENHI) (FY2021)



## Patent Licensing Rate University Fact Book 2022 (Japan Business Federation)



## Ordinary Revenues (FY2021)



## Times Higher Education THE World University Rankings: Japan 2022

